

9.1 RESPONSIBLE AGENCIES

The Bhubaneswar Municipal Corporation is responsible for collection, transportation and disposal of solid waste generated within the Bhubaneswar Municipal Area. Solid waste management is under the charge of the Health Officer. Organizational Pattern of the solid waste management in Bhubaneswar Municipal Corporation (BMC) is given in fig ---

Two different departments health and engineering are responsible for solid waste management. The drainage department is responsible for construction and maintenance of drains, public conveniences like community bins. etc, while the engineering departments looks into purchase and maintenance of waste transportation vehicles and routing of vehicles to various Wards.

Total number of staff in health department at various levels is given in Table 9.1.

Table 9.1
Staff under the health Department of BMC

Level	Number	Area
Health Officer	1	BMC
Sanitary Inspector	2	2 or 3 wards
Zamadars	30	wards
Sweepers	1186	blocks

Source: BMC

The rag pickers contribute to a lot for the solid waste collection. Each of these rag pickers work on dumpsites to pick up useful waste, for 3 to 4 hours in a day. Materials preferred by them in order of priority are glass, textiles, polyethene bags, and metallic containers. Each rag picker collects about 5 Kg of waste a day, which is sold to 'Kabadi wala' for recycling at industry. These rag pickers work at both primary and final disposal sites in the City.

The Bhubaneswar City is divided into 30 Sanitary Wards and each ward is divided into 42 Units. The frequency of collection varies depending on the type of locality. The frequency of collection is at least once in a day in busy commercial areas. In other areas, the waste is collected once in 3-7 days. In a few residential area are through containers, where containers are automatically unloaded in trucks and transported directly to the disposal sites.

Chapter 9

Solid waste

The present management practice is only limited to collection and disposal in low-lying areas. Only a portion of total waste generated is transported for dumping, others litter around creating an unhygienic and unsanitary condition.



9.2. WASTE GENERATED

At present Bhubaneswar City generates 300 to 350 Tons of solid waste per day with a per capita generation of about 500 grams a day. The composition of solid waste varies according to location, standard of living, energy sources and seasons. The major sources of Solid Waste generated in the City are households, Street Sweepings, commercial areas including markets, offices, industries, hospitals and hotels and restaurants. The Solid Waste is broadly categorized into:

- Municipal Solid Waste
- Hospital Waste
- Hazardous Waste

Municipal Solid Waste:

The waste includes the domestic, commercial, institutional and the debris generated out from the construction and the demolition wastes. Ward wise generation of municipal solid waste generated in the city is given in Table 9.2.

**Table 9.2
Ward Wise Waste Generation In The City**

Ward No	Population Density (Persons/ residential km ²)		Waste Generated (t/d)	
	1991	1999	1991	1999
1	2201	6075	0.55	3.04
2	3784	10444	0.95	5.22
3	10413	28739	2.60	14.37
4	6652	18360	1.66	9.18
5	18994	23552	4.75	11.78
6	21674	39013	5.42	19.51
7	15934	28680	3.98	14.34
8	35118	43546	8.78	21.77
9	27099	33603	6.77	16.80
10	23741	29439	5.94	14.72
11	30514	37837	7.63	18.92

Ward No	Population Density (Persons/ residential km ²)		Waste Generated (t/d)	
	1991	1999	1991	1999
12	17335	21496	4.33	10.75
13	10963	13594	2.74	6.80
14	10862	19552	2.72	9.78
15	33277	41264	8.32	20.63
16	15892	28605	3.97	14.30
17	18341	33013	4.59	16.51
18	1556	4294	0.39	2.15
19	2211	6104	0.55	3.05
20	7111	12801	1.78	6.40
21	16963	21034	4.24	10.52
22	16494	20452	4.12	10.23
23	26881	33332	6.72	16.67
24	16817	30271	4.20	15.14
25	10056	18100	2.51	9.05
26	8947	11095	2.24	5.55
27	7001	8681	1.75	4.34
28	21631	26822	5.41	13.41
29	20449	25357	5.11	12.68
30	12278	15224	3.07	7.61
Total			117.80	345.19

Note the solid waste generated is calculated on the basis of:

* @ 250gm per capita for 1991 # estimated as per the survey conducted @ 486gm (avg.) for 1999

The waste generated from the various wards can be categorized in three categories:

Waste Generating Capacity	Waste (t/d)	Wards
Large	10-22	22, 21, 12, 5, 29, 28, 16, 3, 7, 10, 24, 17, 9, 11, 6, 15, 9
Moderate	5-10	26, 20, 13, 30, 25, 4, 14,
Low	Less than 5	1, 2, 18, 19, 27

Hazardous Waste:

There are five nos. of Hazardous Waste Generating Units operating in the City. These units generate Battery Waste, ETP Sludge, Used Oil, Used Battery and Chemical Residue type of Hazardous Waste. Details of these industries are given in Table 9.3. Management of hazardous waste has to cover all stages of handling, which include collection, storage, transportation, treatment and disposal. Hazardous Waste Management Practice in Bhubaneswar City is given in Table 9.4

Table 9.3
Hazardous Waste Generating Units In City

Name Of Industry	Waste Description	Waste Quantity	Waste Type	Waste Management
Shakti Battery, Laxmi Sagar, Bhubaneswar	Battery Waste	1.4 MT	Recyclable	Sold
Trimurty Paints and Chemicals, Mancheswar IE, Bhubaneswar	Residue of Coating	0.18 MT	Incinerable	Burnt as Such
Orissa Drugs & Chemicals Ltd., Mancheswar IE, Bhubaneswar	Residue from Medicine Production	1.0 MT	Land Disposable	Disposed in Impervious Lined Pit
Kurlon Ltd. Chandaka IE, Bhubaneswar	ETP Sludge	5.71 MT	Land Disposable	Disposed in Impervious Lined Pit
	Chemical Residue	0.36 MT	Land Disposable	Disposed in Impervious Lined Pit
	Waste Water Sludge During Purification	0.5 MT	Land Disposable	Disposed in Impervious Lined Pit
	Used Oil	0.2 MT	Recyclable	Sold to Outside Parties
	Used Battery	3 Nos.	Recyclable	Sold to Outside Parties
Carriage Repair Workshop, Mancheswar IE, Bhubaneswar	Used Oil	2000 Nos.	Recyclable	Sold to Outside Parties
	Used Battery	2 MT	Recyclable	Sold to Outside Parties
	Total			

Source: State Pollution Control Board, Orissa, Bhubaneswar

Table 9.4
Hazardous Waste Management Practice In Bhubaneswar City

Name of the Industry	Collection	Storage System	Transportation	Treatment	Disposal
Shakti Battery, Laxmi Sagar, Bhubaneswar	Manual	Inside the Premises	Manual	Nil	Inside the Factory Premises and sold to Outside Parties
Trimurty Paints and Chemicals, Mancheswar IE, Bhubaneswar	Manual	Open Space	Manual	Nil	Burnt
Orissa Drugs & Chemicals Ltd., Mancheswar IE, Bhubaneswar	Manual	Open Space	Manual	Nil	On Land
Kurlon Ltd. Chandaka IE, Bhubaneswar	Manual	Open Space	Manual	Nil	On Land
	Manual	Inside the Premises	Manual	Nil	Inside the Factory Premises and sold to Outside Parties
Carriage Repair Workshop, Mancheswar IE, Bhubaneswar	Manual	Inside the Premises	Manual	Nil	Inside the Factory Premises and sold to Outside Parties

Source: Bhubaneswar Municipal Corporation, Bhubaneswar, Orissa

There is no separate dumping site identified for the hazardous waste.

Bio-Medical Waste:

The wastes from hospitals, nursing homes, clinics etc. are apparently hazardous and infectious unless treated carefully. The indiscriminate disposal of these bio-medical wastes poses great risk to human health and the environment, and can epidemic within no time.

Within Bhubaneswar Municipal Corporation areas there are five Govt. Hospitals, Two private hospitals, seventeen Government Dispensaries, about 20 Nursing Homes and many private clinics. Detail list of Hospitals in the City area are given in Table 9.5. The surgical wastes are kept untreated on open drums. The Bio-medical Wastes are currently dumped along with municipal solid waste. This poses high risks to the City.

Table 9.5
List Of Hospitals/Nursing Homes In Bhubaneswar City

Name and Location of the Area	Hospital Waste Generated/Month In Kg
Jeevan Rekha Nursing Home, IRC Village, N-4-346/B, Bhubaneswar	300
Kalinga Hospital Chandrasekharpur, Bhubaneswar	5250
Orissa Nursing Home, 1893/2026 Nayapalli, Bhubaneswar-12	55
Sunflower Nursing Home Cuttack Road, Bhubaneswar	34
Deepak Nursing Home Saheed Nagar, Bhubaneswar	245
Capital Hospital, Unit-VI Bhubaneswar	NA
Rajdhani Nursing Home Saheed Nagar, Bhubaneswar	33
Park View Nursing Home IRC Village, Bhubaneswar	2.5
Maternity Care Nursing Home & Clinic, Sailashree Vihar, Bhubaneswar	938.85
Jeevan Nursing Home & Clinic, Sailesshree Vihar Bhubaneswar	12.5
ESI Hospital, Bhubaneswar	
Dr. Abhin Chandra Tripathy Homeopathic Medical College & Hospital, Bhubaneswar	30
Swarna Nursing Home, Unit-VIII, Bhubaneswar	18
Kar Clinic, Unit-IV, Bhubaneswar	147
Panda Nursing Home, BDA Colony, Chandrasekharpur, Bhubaneswar	NA
Hope Fertility Clinic & Research Centre, C-35, Saheed Nagar, Bhubaneswar	16
Usthi Diagnostic Research Centre, Plot No-N-41/1, IRC Village, Bhubaneswar	2.5
S.S.B. Hospital, Oil Orissa Building, Nayapalli, Bhubaneswar	2.205

Name and Location of the Area	Hospital Waste Generated/Month In Kg
Delta Medicare, Plot No-1/258, IRC Village, Bhubaneswar	100
Jagannath Seva Sadan, 164, Bapuji Nagar, Bhubaneswar	33
Panda Nursing Home Press Colony, Unit-III, Bhubaneswar	10.7
Kasturi Medical Care, 19, Bhoumanagar, Unit-IV, Bhubaneswar	6,505
Pioneer Clinic-Cum Nursing Home, H-29-19/1, Chandrasekharapur, HB Colony, Phase-I, Bhubaneswar	30
Care Hospital Utkal Heart Center, 681, Saheed Nagar, Bhubaneswar	450
Rekha Poly Clinic, Plot No-1853, Ratharoad, Near Tinimundia Temple, Old Town, Bhubaneswar-2	12
Zonal Dispensary, Unit-IX, Bhubaneswar	2.5
Unit-8, Zonal Dispensary, Bhubaneswar	--
Mamata Nursing Home, Duplex-11, SaileshreeVihar, Chandrasekharapur-11, Bhubaneswar	30
Sanjeevani Nursing Home, 3103-A, Lewis Road, Bhubaneswar	19

Source: State Pollution Control Board, Bhubaneswar, Orissa

Hotels and Institutions:

Bhubaneswar City has about 24 High spending group hotels and 53 moderate groups of hotels and Guesthouses (including five star hotels, lodges) having capacity of about 3900 rooms. The City has a number of restaurants (figure is not available). These produce a large amount of solid Waste.

9.3 SOLID WASTE MANAGEMENT

Collection:

The collection of solid waste is done in two phases. The first stage is primary collection, in which the waste is collected on hand carts and care carried to rubbish places called Primary Collection Centers (PCC) from where it is disposed to the disposal site by trucks, tractors, trippers etc.

The Bhubaneswar Municipal Corporation is divided into 15 conservancy circles for effective sanitary management and disposal of wastes. There are 11 nos. of collection centers in the City. From the collection centers, the wastes are transported by Municipality vehicles to the dumping ground. In major areas, concrete bins have been provided on the roadsides. The refuges from dustbins and roads are transported in two wheeler barrows to the nearby collection centre. Besides that, domestic garbage in many places is thrown to nearest vacant land.



Table 9.6
Solid waste Collected and uncollected in Bhubaneswar

Ward No	Waste Generated (t/d)	Collection centre	Volume (m ³)	Waste collected (t/d)	Waste un collected (t/d) {B- E}	% Of Waste uncollected
(A)	(B)	(C)	(D)	(E)	(F)	(G)
1	3.04	No	6	2.37	0.67	21.98
2	5.22	No	0	0	5.22	100.00
3	14.37	No	8	3.16	11.21	78.01
4	9.18	No	6	2.37	6.81	74.18
5	11.78	No	24	9.48	2.30	19.50
6	19.51	No	6	2.37	17.14	87.85
7	14.34	No	6	2.37	11.97	83.47
8	21.77	No	8	3.16	18.61	85.49
9	16.80	1	18	7.11	9.69	57.68
10	14.72	1	22	8.69	6.03	40.96
11	18.92	no	22	8.69	10.23	54.07
12	10.75	1	6	2.37	8.38	77.95
13	6.80	1	10	3.95	2.85	41.89
14	9.78	No	10	3.95	5.83	59.59
15	20.63	No	6	2.37	18.26	88.51
16	14.30	No	6	2.37	11.93	83.43
17	16.51	No	6	2.37	14.14	85.64
18	2.15	No	3	1.185	0.96	44.81
19	3.05	No	3	1.185	1.87	61.17
20	6.40	no	12	4.74	1.66	25.94
21	10.52	1	12	4.74	5.78	54.93
22	10.23	2	34	9.48	0.75	7.30
23	16.67	1	12	4.74	11.93	71.56
24	15.14	1	6	2.37	12.77	84.34
25	9.05	No	6	2.37	6.68	73.81
26	5.55	1	12	4.74	0.81	14.56
27	4.34	No	18	3.95	0.39	9.00
28	13.41	1	6	2.37	11.04	82.33
29	12.68	No	8	3.16	9.52	75.08
30	7.61	No	6	2.37	5.24	68.86
Total	345.19	11		112.18	229.97	67.21

Source: (B) - Calculated on the basis of SW generating @ 486 gm (avg.) per capita per day for 1999
(C) & (D) " Final Report on Pilot Project for Solid Waste Management in Bhubaneswar" for BMC
(E) Calculated on the basis of the standard 395 kg/m³ (Source: Manual for MSW (1st edition) , Ministry of Urban Development, Govt. of India)

In most of the areas the waste from the streets is collected manually using old and conventional wheelbarrows and handcarts. Because of the narrow lanes and space constraints, the movement of

the vehicles for secondary collection is not possible. These areas are left with no other option except to adopt manual operation during both the primary as well secondary collection.



It was also observed that the conditions round the bins were unhygienic and dirty waste in the bins is easily accessible to the animals and the rag pickers. In the absence of house-to-house collection and unhygienic dirty conditions around the bins, people throw the waste on the streets or in some unoccupied land or in the drains. In many places, the waste lies scattered and exposed, providing an ideal breeding ground for diseases. This is also leading to frequent choking of drains and subsequent water logging in many areas of the city.

For sweeping of streets, sweepers are paid at the rate of Rs 10 each per month for buying of brooms. Of the 1860 sweepers, if it assumed that 1200 sweepers are engaged for street sweeping, but BMC does not have sufficient number of handcarts. Due to the inadequate number of handcarts, sweepers normally do not carry the refuse to community bins and instead leave it in waste heaps along the streets.

Apart from these, the rag pickers collect recyclable materials such as polythene bags, bottles, glass bottles etc., from these dumps and sell those to Kawadi Wallah. Metallic Wastes are collected from door to door by people with rickshaw trolleys and ultimately sold to Kawadi Wallah. Household rubbish from multistory apartments is dumped by the roadside. Various recyclable wastes, collected in Bhubaneswar City are reflected in Table 9.7.

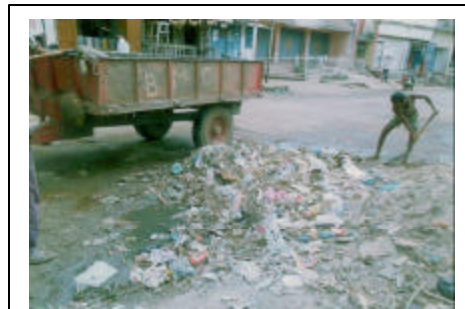
Table 9.7
Quantity Of Recyclable Solid Waste Collected In Bhubaneswar City

Sl.	Types	No. of Kawadiwallah	Quantity Collected (T/Month/ Kawadiwallah)	Total Quantity (TPM)
1	Metal Scrap	4	55	250-300
2	Glass	5	27	100-150
3	Plastic/Polythene	3	30	40-45
4	Waste Paper/ Card Board	8	40-45	80-100
5	New Prints	20	4-5	16
6	Miscellaneous	21	--	--

Source: Bhubaneswar Municipal Corporation, Bhubaneswar, Orissa

Transportation:

The BMC is facing serious shortage of waste transportation vehicles and facilities such as garages and workshops needed to maintain and repair the vehicles. The Municipal Corporation has only 44 vehicles including tractors, tippers, loaders and refuse collectors of which only 20 are in working condition. As a result, only 35 % of the city waste is being transported and disposed by the Municipal Corporation daily. Due to the shortage of vehicles, many wards are not attended for days together, leading to the accumulation of the waste. Also, Due to old age and absence of preventive maintenance there are frequent breakdowns of the vehicles. Added to this is the shortage of spare parts that cause delay in



repairs resulting in longer down time. In fact, it appeared that in many wards 60% to 80% wastes are never collected.

The types of vehicles available with BMC for waste transportation and their present conditions are given in Table 9.8. The frequency of transportation of wastes varies from location to location, depending on the rate of generation. Wastes from the markets and densely populated areas are transported daily. Wastes from the residential zones are usually transported twice a week and the wastes from institutional house like Survey of India, Regional Research Laboratory, Regional Institute of Education, Vani Vihar etc., are collected once a week.

Table 9.8
Transport Facilities Available With BMC

Type Of Vehicle	Existing Numbers	Hired	Volume (m ³)
Tata Truck	4	4	12
Bedford Truck	2	-	12
Canter/Mini Trucks	2	3	6
Escort Carrier Container	1	-	6.5
Tractor	7	13	4
Dozer	1	1	6
TOTAL	17	27	

Source: Bhubaneswar Municipal Corporation, Bhubaneswar, Orissa

Disposal

The Bhubaneswar Municipal Corporation is collecting 112 T waste per day out of the total 345 MT per day waste generation in the city. The ward-wise quantity of uncollected solid waste in different zones is given in Table 9.5. The status of solid waste collection in various parts of the city is shown in Map 14. As may be seen, the solid waste and disposal is unsatisfactory in most of the areas of the city.

Bhubaneswar has five waste disposal sites within the BMC area namely Jharpada, Rasulgarh, Mancheswar, near Womens' Polytechnic, behind Khandagiri and Udaygiri and Baragada area. The solid waste is also being dumped irregularly in many areas, even in residential colonies, along the highways or even in parks. There is no system of monitoring the dumping activities. Sweepers are also resorting to open burning due to shortage of handcarts and inadequate capacity of the bins.

9.5 SOLID WASTE PROBLEM AREAS

Based on the problems associated with solid waste management, the city has been zoned into:

- i. Areas with regular problems;
- ii. Areas with poor collection efficiency
- iii. Areas not needing SW management
- iv. Areas where SW management system does not exist.
- v. Areas with little or no problems
- vi. Areas with occasional collection and disposal problems

These zones are shown in Map 14. The area-wise details on the type of activities generating solid waste, type of solid waste expected from various activities and the status of solid waste collection was physically verified to prepare the map.

Criteria	Characteristics	Wards	Prominent Areas
Areas with occasional collection and disposal problems	These are relatively better-organized residential colonies	5	Sahid Nagar
		21	Unit – 8 (Keshari Nagar) , Unit – 6 (Ganga Nagar), Unit – 7 (Surya Nagar)

Criteria	Characteristics	Wards	Prominent Areas
problems		23	Raj Bhawan, Secretariat, Heads of the Department, 120 Infantry Battalion, Assembly, AG Square, PMG Square etc Goutam Nagar, Budha Nagar, Old Station Bazar, Buddheswari Colony, Sarala Nagar,.
		27	Brahmeswar Patna, Ratnakarbag, Rajarani Colony, Nageswar Tangi, Maharana Sahi, Gyana Nagar, Boitala Temple, Badu Sahi, Jagannath Matha Line, Hata Sahi, Gouri Nagar, Gosagoreswara
		28	Rameswarpatna, Barik Sahi, Kunchapatna Sahi, Mishra Sahi, Harachandi Sahi, Pujapanda Sahi, Mangala Sahi, Narada Sahi, Behera Sahi, Chemadi Bhoi Sahi, Punama Gate (Bhoi Nagar), Pallaspalli, New Bapuji Nagar (Aerodrome Area)
Areas with little or no problems	These areas are basically owned by agencies other than BMC like Air port, Civil Lines etc.	9	Unit – 9 Flat Quarters, Unit – 9 Single Quarters(Govt.), Unit – 9 Private Plot (Chitrakuta Ashrama Area and Bayababa Matha Area)
		10	Satyanagar, Press Colony, Old Malisahi, Station Bazar (Kharabela Nagar Estate Area), Ashok Nagar (Private Plot)
		12	Unit – 4, Madhusudan Nagar, Bhouma Nagar, Old AG Colony, MLA Colony, Old RBI Colony, Old SBI Colony
		14	IRC Village, N1, N2, N3, N4, N5
		19	Aiginia, Dumuduma, Jadupur, Jadupur Housing Area, Begunia, Raghunath Nagar, Jagamara Village, Barabari, Dharma Vihar, Khandagiri, Pokhariput Revenue Village, Gandamunda, Udaygiri
		22	Forest Park, Unit – 1 (Govt. Quarters), Bapuji Nagar, Kedarpalli Area & Private Plot, Frontal area of Forest Park
Areas with poor collection efficiency	Efforts put up by BMC are minimum compared to other areas. Irregular lifting of garbage is the major problem in these areas. Some of these areas, given to private agencies, show poor performance. Apart from problems of garbage, sweepers/resident in these areas often burn the collected garbage creating the problem of air pollution.	3	Bhatapara, Chakeisiani, Sameigadia, Palasuni, Rasulgarh New Industrial Estate, Kalaraput Revenue Village (Rasulgarh), Bada Govindprasad Village, Housing Board Colony, Pandara Village
		4	IMFA (North), Patnaik Industry, Govind Prasad, Berana Village, Bamikhal Village, Jharpada Revenue Village, Housing Board Colony, Budhharaj Hospital Area, Pandara Brick Factory Area
		8	Acharya Vihar, OSEB Colony, Regional College Area, New AG Colony, Nuapalli Sevasrama Area
		11	Unit – 2 (Govt. Quarters), Unit – 3 (Govt. Quarters), Unit – 3 (Kharavela Nagar Private Plot, West Side)

Criteria	Characteristics	Wards	Prominent Areas
		13	Nuapalli Village, Nuapalli Behera Sahi, Nuasahi, Nuapalli Brit Colony, Shastri Nagar, Nilakantha Nagar, Kalinga Stadium Area
		15	Unit – 8 (Rajbhawan Colony, Power House Colony, Bachelor Barrak, CBI Colony, DP Colony, Eng. Colony, OMC Colony, Paradeep Colony)
		20	Unit – 8 (Krushi Vihar), Siripur, PG Hostel, Farm Area, Aerodrome Interior Area and Bhimpur
		24	Laxmisagar HB Colony, Haladiapadia, Laxmisagar Village, Old Budheswari Post Office Area (Cold Storage), Fish Market Area, Charbatia etc.
		26	Chintamaniswara, Champapokhari, Sabara Sahi, Kalpana Government Quarters and Private Plots, BJB Nagar, Gadhiakhal, Mainsiakhal and Museum Colony
		30	Samantrapur, Bhuasuni, Nuagaon, Garrage Square, Sriram Nagar, Sasan Field, Kedar Lane, Basistha Nagar, Kharakhai Baidyanath Sahi, Kapileswar Village (Total
Areas with regular problems	Areas where collection of garbage is not well organized. Scattered dumps can be seen in these areas, creating unsanitary conditions and exposing people to health risk. There are a number of primary collection centers in the CBD area but the problem is still persisting as the generation is exceeding the collection. The waste dumps can be seen along the roads and in open lands.	1	(Patia Village, Kanan Vihar, Patia Industrial Area, Patia Housing Board Area, Sikharachandi, Munda Colony, Chandrasekharpur Housing Board (Phase – I), Sailashree Vihar, Niladri Vihar, Railway Colony Area)
		2	Damana, Chandrasekharpur Village, Chandrasekharpur Housing Board (Phase-2), Gadakana, Rangamatia, Sainik School, Govt. Press, Gadakana Railway Colony, Railway Repairing Centre, OMFED Colony
		6	VSS Nagar, Second Postal Colony, Patharabandha Area, Satsanga Vihar, Vani Vihar, Laxmi Vihar,
		7	Gajapati Nagar, RRL Colony, Survey of India, 7 th Battalion Area, Oberoi Hotel Area, Salia Sahi, Jayadev Vihar, Munda Sahi, Nilachakra Nagar
Areas where SW management system does not exits.		16	Paika Nagar, Baramunda Village, Baramunda H.B. Colony, New Bus Stand Area, Jagannath Vihar
		17	CRPF Central Colony, Ekamrakanan Area, Bharatpur Revenue Area Shampur, Ghatikia, Jokalandi Basti Area, Kalinga Nagar
		18	Shampur, Ghatikia, Jokalandi Basti Area, Kalinga Nagar

Criteria	Characteristics	Wards	Prominent Areas
		25	Baragada Village, Housing Board Colony, Pandava Cave, Daya (East), East Side of Canal
		29	Sundarpada, Kapilprasad Village, Yogeswar Patna, Keuta Sahi, Bhimtangi, Housing Board Area, Baunsakhani, Noliasahi, Lingaraj Station Area